

Schutzvermerk nach DIN ISO 16016 beachten! Nachdruck nur mit unserer Genehmigung!		3,2 / -0,05 / -0,2		tolerance	material:	weight: 25.50
All rights reserved according to DIN ISO 16016! Reprint with our permission only!		ISO 7168 M			drawing no.: 0019443	
	date	name		description: RS 25 Magnetrundfutter		
	drawn 08.03.2024	TW				
	appr. 12.03.2024	TW				
				part no.: 210325		sheet 1 / 2
						A3
rev.	change	date	name	scale: 1:2.5		Status: Freigegeben

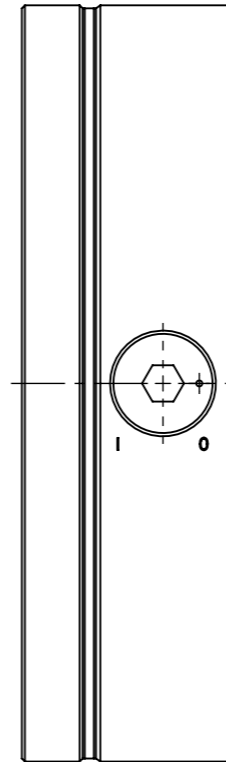
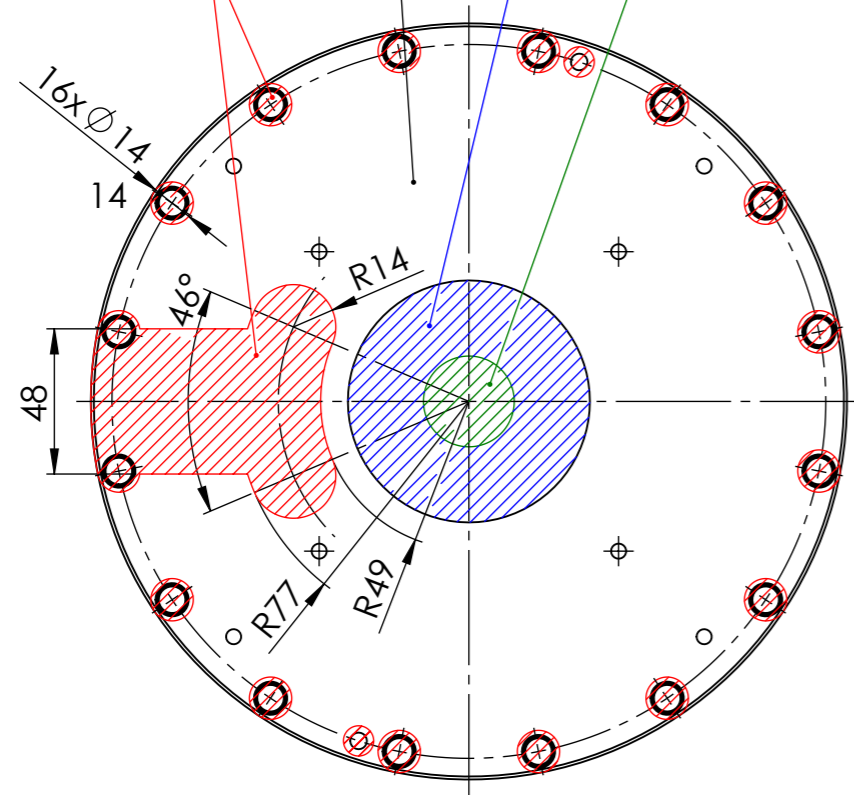
**FLAIG**  
Magnetsysteme  
www.flraig-te.de

Maximum drill depth= 35mm

Maximum drill depth= 30mm

**NO DRILL ZONES!!!**

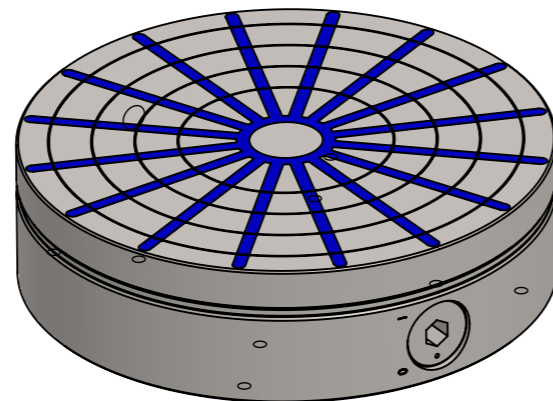
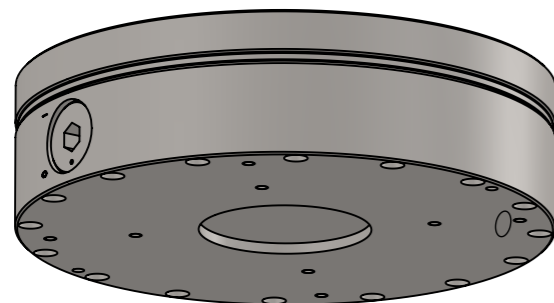
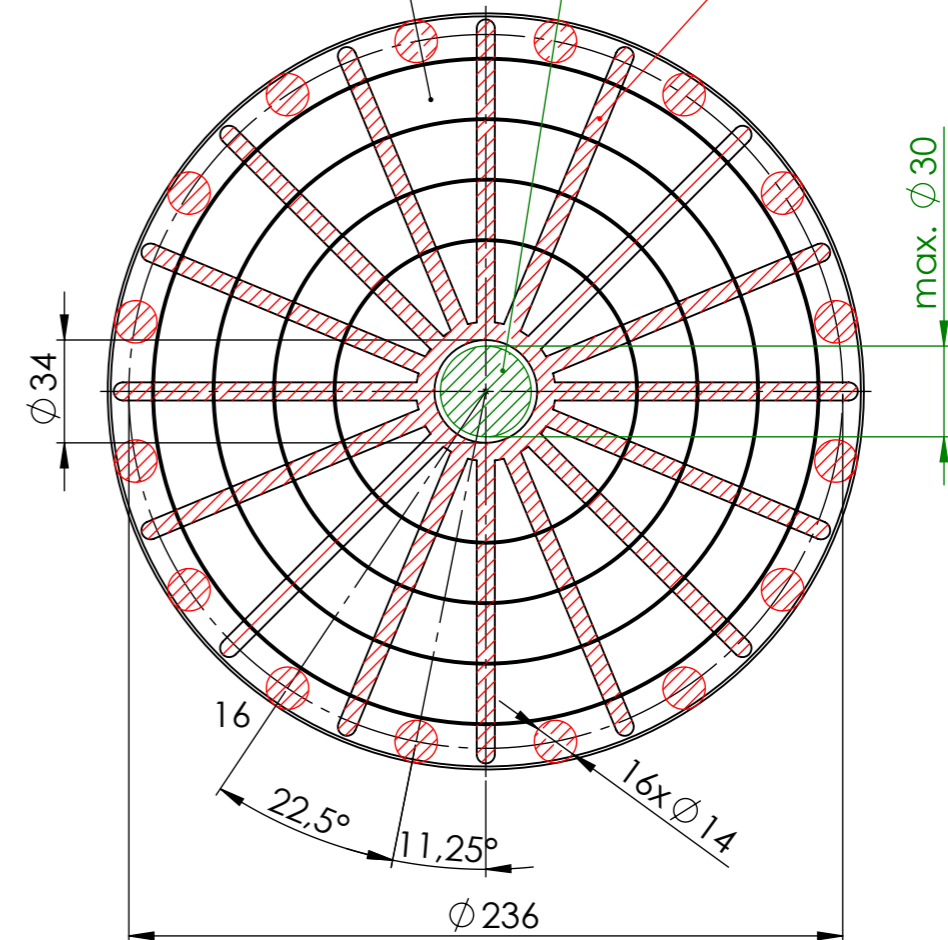
Maximum drill depth= Through



Maximum drill depth= 15mm

Maximum drill depth= Through

**NO DRILL ZONES!!!**



Schutzvermerk nach DIN ISO 16016 beachten! Nachdruck nur mit unserer Genehmigung!					tolerance	material:	weight: 25.50
All rights reserved according to DIN ISO 16016! Reprint with our permission only!					ISO 7168 M	drawing no.: 0019443	
				date	name	description: <b>RS 25 Magnetrundfutter</b>	
				drawn 08.03.2024	TW		
				edit 12.03.2024			
				appr. 12.03.2024	TW		
				 www.flraig-te.de		part no.:	sheet 2 / 2
						210325	A3
rev.	change	date	name	scale: 1:2.5		Status: Freigegeben	